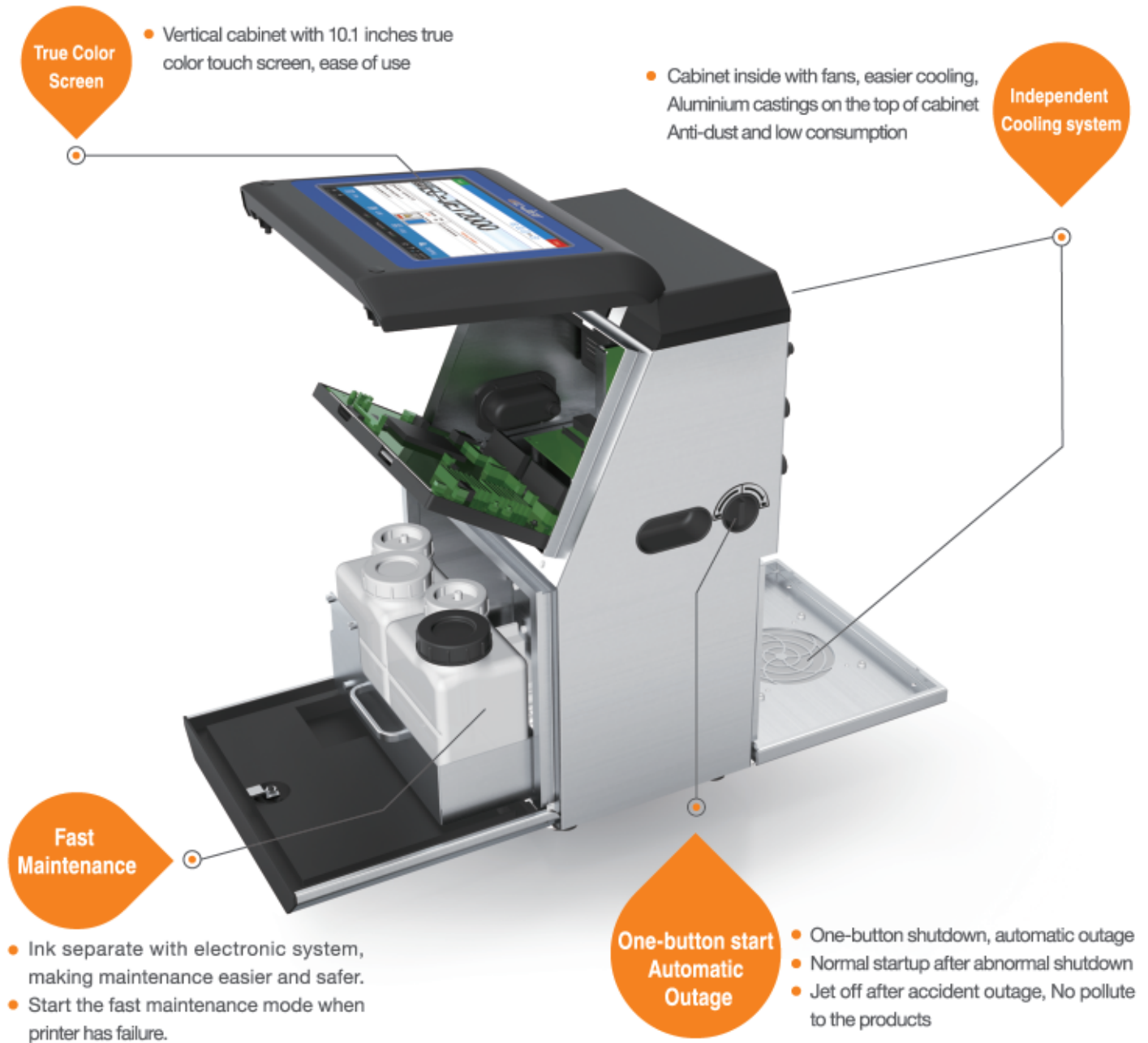


EC-JET



EC-JET2000

PHARMAPACK



Unique Three-door Design

Maintenance door, consumable door and electronic door



New Ink System

Reduce electromagnetic interference, low consumption



Automatic Cleaning System

Automatic print head cleaning feature ensures normal startup after prolong shutdown period



Reliable Printing

Completely new printhead design ensures printing more stable and reliable maintenance



Stable Performance

Stable jet adapt to the dynamic applications



Modular Design

Pretty appearance
stable structure





Economical Environmental And Cost-effective

Ultra high speed at
380 meters per minute
(1246ft per minute)
High efficiency
saves up to 20%
on operating costs



Fast Editing

Support fast on-line editing
switching, and
previewing print data



Barcode Printing

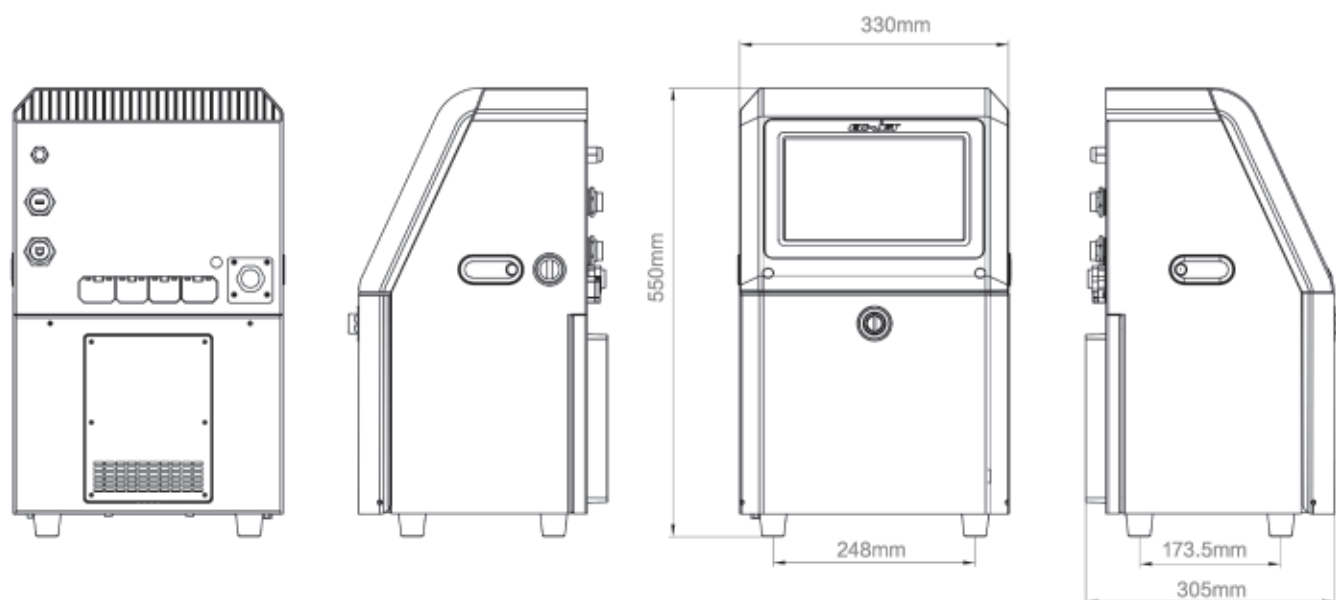
1D barcode and 2D barcode
printing capability
On-screen logo
creation and editing

More...

- Character bolding horizontally and vertically
Dot bolding
- Completely new printing control program
make printing more beautiful

- Recycle detects automatically, easy to find
out the jet offset in time
- Flexible automatic date and time format
automatically date calculating function

Dimensions



Application



Daily industry



Food



Pharmaceutical



Beverage



Excellent EC-JET, Intelligent Choice

Model	EC-JET2000
Print speed	Up to 380 meters/min
Character	90° 、180° 、270° revolve available
Message capacity	Maximum 4GB
Message height	34 dots (Max)
Print line	1-4 lines
Graphic format	BMP/PNG/JPG
Text type	Fixed text, serial number, date, counter, shift code random code, 1D bar code, 2D bar code
Max Message length	2048 characters (7X5 dots)
High precision screen	10.1 inches color high precision touch screen
Operation system	EC-JET self-developed "SEQ"operation system
Interface	Photocell, Shaft Encoder, External Alarm, USB, Ethernet RS-232 communication
Appearance	Industrial-grade stainless steel cabinet
Controller installation	desktop
Operating temperature	5-45℃
Relative humidity (no condensation)	10-90%
Protection grade	IP55
Power Supply	100-240V AC50/60HZ

**Please consult EC-JET for more information
5*5 dots Single line



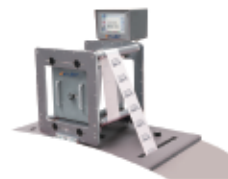
High-resolution Inkjet Printer



Large Character Ink-jet Printer



Laser Coding System



Thermal Transfer
Over-printing Printer



Consumable



GUANGZHOU EC-PACK PACKAGING EQUIPMENT CO.,LTD.

Address: No.16 Huang Qi Shan Road, Yong He
Economic Zone, GETDD, Guangzhou, China.
Tel: +86-20-82209518 Fax: +86-20-82209511
<http://www.ec-jet.com>
E-mail: market@ec-jet.com

Pharmapack Technologies Corporation

Address: No.16 Huang Qi Shan Road, Yong He
Economic Zone, GETDD, Guangzhou, China.
Tel: +86-20-82215907 Fax: +86-20-82213367
<http://www.pppharmapack.com>
E-mail: market@pppharmapack.com

Pharmapack North America

Address: 5095 East Airport Drive
City of Ontario, CA 91761, USA
Tel: +1 909 390 1888
Fax: +1 909 390 5388

Pharmapack Europe

Address: Via Molino Rosso 10F
40026 Imola (BO) Italy
Tel: +39 0542 1890315
Fax: +39 0542 1890314

Pharmapack Packaging Equipment CO. India Pvt. Ltd.

Address: 206, 2nd Floor Srinivasa Tower,
Adjacent Hotel ITC Kakatiya,
Hyderabad - 500016, Telangana