



# EC-JET2000

Continuous Inkjet Printer

PHARMAPACK

**True Color Screen**

- Vertical cabinet with 10.1 true color touch screen, ease of use

- Cabinet inside with fans, easier cooling, Aluminium castings on the top of cabinet Anti-dust and low consumption

**Independent Cooling system**

**Fast Maintenance**

- Separate ink system with electronic system, making maintenance easier and safer.
- Start the fast maintenance mode when printer has failure.

**One-button start Automatic Outage**

- One-button shutdown, automatic outage
- Normal startup after abnormal shutdown
- Jet off after unexpected power outage, No pollute products



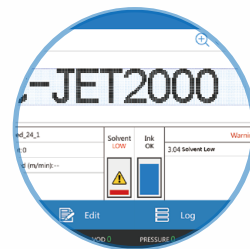
**Unique Three-door Design**

Maintenance door, consumable door and electronic door



**New Ink System**

Reduce electromagnetic interference, low consumption



**Intelligent startup-shutdown**

One button start, automatically choose different startup mode according to last shutdown. One button shutdown, it can preset whether to automatically cut off or not, and when to cut off the power



### Reliable Printing

Completely new printhead design ensures printing more stable and reliable maintenance



### Stable Performance

Stable jet adapt to the dynamic applications



### Modular Design

Pretty appearance  
stable structure



**USB Data Transmission**

- Software upgrade
- Data backup, import and export by U-disk



**Photocell/Shaft Encoder**

**RS232**

**Alarm output**

**Remote Control**

- LAN remote control operation



**Economical & Environmental,  
and Cost-effective**

Ultra high speed at  
380 meters per minute  
(1246ft per minute)  
High efficiency  
saves up to 20%  
on operating costs



**Fast Editing**

Support fast on-line editing  
switching, and  
previewing print data



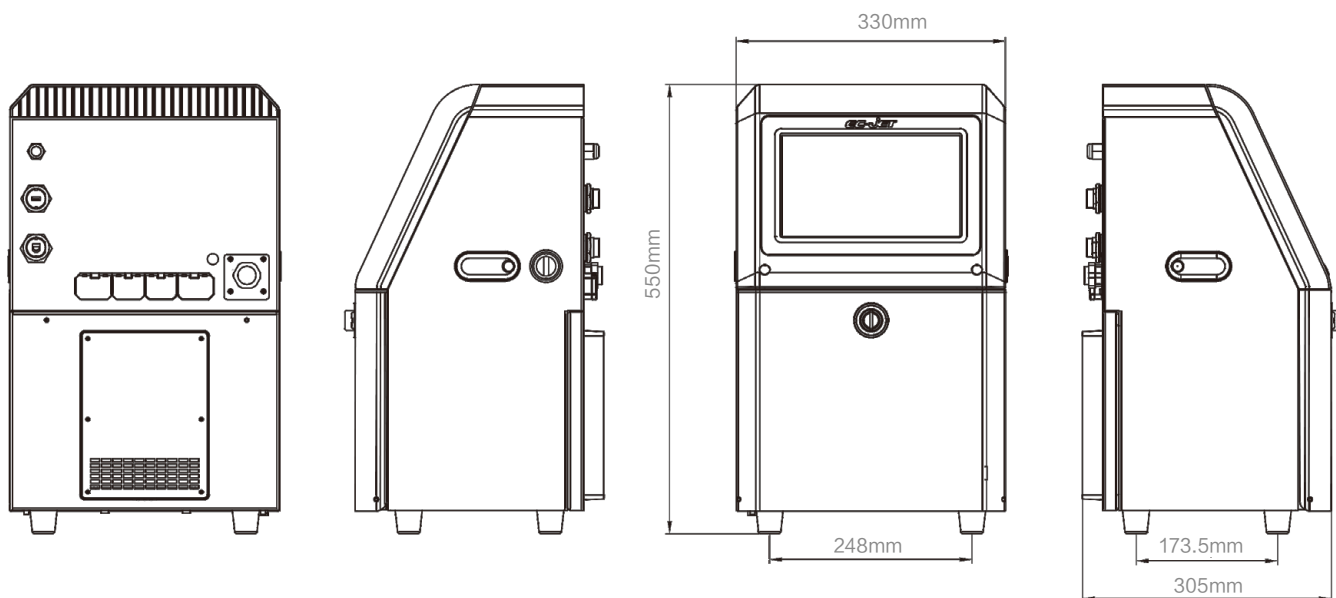
**Barcode Printing**

1D barcode and 2D barcode  
printing capability  
On-screen logo  
creation and editing

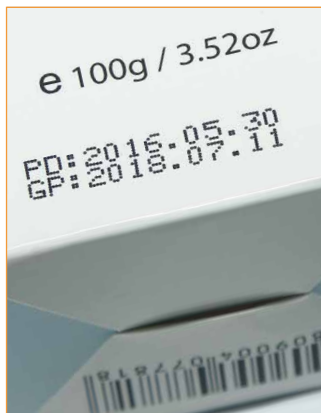
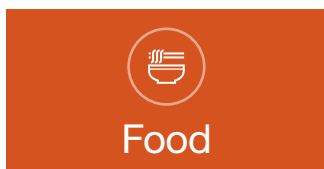
**More...**

- Character bolding horizontally and vertically
- Dot bolding
- Completely new printing control program make printing more beautiful
- Recycle detects automatically, easy to find out the jet offset in time
- Flexible date and time format automatically date calculating function

# Dimensions



# Application



# Excellent EC-JET, Intelligent Choice

Model	EC-JET2000
Print speed	Up to 380 meters/min
Character	90° 、180° 、270° revolve available
Message capacity	Maximum 4GB
Message height	34 dots (Max)
Print line	1-4 lines
Graphic format	BMP/PNG/JPG
Text type	Fixed text, serial number, time, counter, shift code, database, random code, 1D bar code, 2D bar code
Max Message length	2048 characters (7X5 dots)
High precision screen	10.1 true color screen
Operation system	EC-JET self-developed "SEQ" operation system
Interface	Photocell, Shaft Encoder, External Alarm, USB, Ethernet RS-232 communication
Appearance	Industrial-grade stainless steel cabinet
Controller installation	desktop
Operating temperature	5-45℃
Relative humidity (no condensation)	10-90%
Protection grade	IP55
Power Supply	100-240V AC50/60HZ

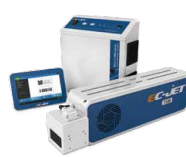
\*\*Please consult EC-JET for more information  
5\*5 dots Single line



High-resolution Inkjet Printer



Large Character Inkjet Printer



Laser Coding System



Thermal Transfer  
Over-printing Printer



Consumable



## GUANGZHOU EC-PACK PACKAGING EQUIPMENT CO.,LTD.

Address: No.16 Huang Qi Shan Road, Yong He  
Economic Zone, GETDD, Guangzhou, China.  
Tel: +86-20-82209518 Fax: +86-20-82209511  
<http://www.ec-jet.com>  
E-mail: [market@ec-jet.com](mailto:market@ec-jet.com)

### Pharmapack North America

Address: 5095 East Airport Drive  
City of Ontario, CA 91761, USA  
Tel: +1 909 390 1888  
Fax: +1 909 390 5388

### Pharmapack Europe

Address: Via Molino Rosso 10F  
40026 Imola (BO) Italy  
Tel: +39 0542 1890315  
Fax: +39 0542 1890314

## Pharmapack Technologies Corporation

Address: No.16 Huang Qi Shan Road, Yong He  
Economic Zone, GETDD, Guangzhou, China.  
Tel: +86-20-82215907 Fax: +86-20-82213367  
<http://www.pppharmapack.com>  
E-mail: [market@pppharmapack.com](mailto:market@pppharmapack.com)

### Pharmapack Packaging Equipment CO.India Pvt.Ltd.

Address: 206, 2nd Floor Srinivasa Tower,  
Adjacent Hotel ITC Kakatiya,  
Hyderabad - 500016, Telangana