



# **ECL6100**

## **Fiber Laser Coding System**

**PHARMAPACK**



**Intelligent**  
**SEQ** Technology

# ECL6100 SERIES

## Fiber Laser Coding System



2D Barcode

The ECL6100 series laser coding system includes models of ECL6120, ECL6130 and ECL6150, etc. With features of compact structure, modular design, high quality permanent marking and diverse applications, the ECL6100 series can meet the application requirements of different production lines.

The ECL series laser coding system is equipped with the most advanced scanning galvanometer technology, which can achieve high quality marking on super large marking area in very high speed. The compact design makes the coder can be integrated and work perfectly in limited working space.

Optional IP65 protection rating design, which meets the requirements of working in harsh environments.



10.1 inch  
Color Touchscreen



High Contrast



Internet



Unique SEQ Operating  
System



- Ease of use
- Compact structure



- Large size color touchscreen
- Simple graphical user interface
- Faster, more convenient and more intuitive to operate



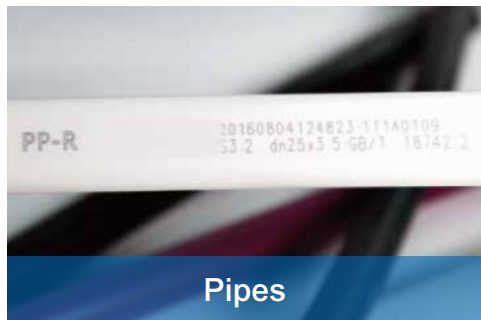
- Modular design
- Easy installation and commissioning
- Flexible mounting stander, can be adjusted to adapt to your production line
- Fast and accurate to set the laser focal distance just with simple operation



- Built-in internet server, can achieve the remote control and network communication



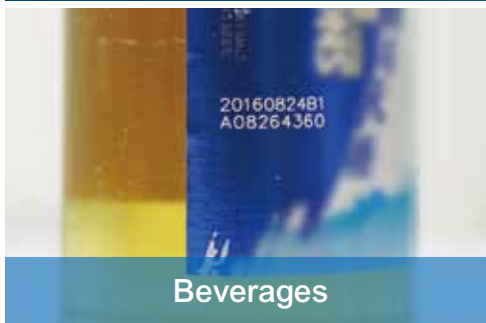
Packaging materials



Pipes



Cables



Beverages



Metal

# More...



## Stable

Optional IP65 protection rating design laser head, make sure the coder can work stably in harsh environment.



## Reliable

No hard disk or UPS needed  
No need PC as independent operating system, making the system more stable  
The user data will not lose when emergency power off or non-planned shutdown.



## High speed

Excellent marking speed and quality  
High quality and permanent coding under high line speed



## Safe

Multi-level password protection



## Environment friendly

None consumable and no pollution to environment

Model	ECL6120	ECL6130	ECL6150
Laser Type	Fiber laser		
Laser Wave Length	1064nm		
Laser Power	20W	30W	50W
Marking speed * (characters/sec)	up to 2000 characters/sec		
Linear Speed *	Depends on the marking area and number of characters, speed up to 600m/min		
Marking Lines	Unlimited within marking area		
Character Height	0.3mm-within marking area		
Fonts	Over 26 types of fonts, support customer design and multi-language		
Barcode Type	1D barcode,2D barcode, Visualead code,etc		
Print Content	Text, Arc text, Graphics, Serial number,Date,Time,File reading data, Shift code, Random code, External data		
Marking Area	70*70mm,110*110mm,160*160mm,174*174mm,205*205mm,300*300mm; 360*360mm, 400*400mm		
User Interface	Help-online, Muti-language support, Support Ethernet remote PC operation and networking		
Laser Head Dimension	440mm*97mm*130mm		
Control Cabinet Dimension	530mm*460mm*160mm		
Touchscreen Dimension	266mm*185mm*43mm		
Product Detect Input	NPN/PNP/24V-detector and shaft encoder		
Singal Input/Output	Condition marking/ Start up/ Stop /Interlock; System ready/Marking/ Failure		
Communication Port	RS-232,Ethernet(100/1000Mbit)		
Power Supply	100-240V AC50/60Hz		
Cooling System	Air cooling		
Operating Tempera- ture & Humidity	5-40 C , 10%-90%RH,non-condensing		
Protective Grade	IP55,can reach to IP65 if required		
Optional	Network and remote control software(TCP/IP),Mounting stander Kit		

\* Marking speed and linear speed are substrate and code dependent



Continuous Inkjet Printer



Large Character Inkjet Printer



High resolution Inkjet Printer



Thermal Transfer  
Over-printing Printer



Consumable



#### Guangzhou EC-PACK Packaging Equipment Co.,Ltd.

Address: No.16 Huang Qi Shan Road,Yong He Economic Zone,GETDD, Guangzhou, China.  
Tel:+86-20-82209518 Fax:+86-20-82209511  
<http://www.ec-jet.com>  
E-mail:market@ec-jet.com

#### Pharmapack Technologies Corporation

Address: No.16 Huang Qi Shan Road, Yong He Economic Zone, GETDD, Guangzhou, China.  
Tel:+86-20-82215907 Fax:+86-20-82213367  
<http://www.pppharmapack.com>  
E-mail:market@pppharmapack.com

#### Pharmapack North America

Address: 5095 East Airport Drive  
City of Ontario, CA 91761, USA  
Tel: +1 909 390 1888  
Fax: +1 909 390 5388

#### Pharmapack Europe

Address: Via Molino Rosso 10F  
40026 Imola (BO) Italy  
Tel: +39 0542 1890315  
Fax: +39 0542 1890314

#### Pharmapack Packaing Equipment CO (India) Private.Limited.

Address:206 Srinivasa Towers,Beside ITC Kakatiya Hotel,Begumpet,Hyderabad,India  
Tel:+91 994 9440230  
Fax:+91 994 9440230