



EC-JET1100

Continuous Inkjet Printer

PHARMAPACK



01

INTELLIGENT CLEANING

The inkjet printer can select corresponding automatic cleaning programs according to different downtime when it is stopped, wash out the inside of valve, ink supply path and nozzles to ensure the next startup is much smoother.



02

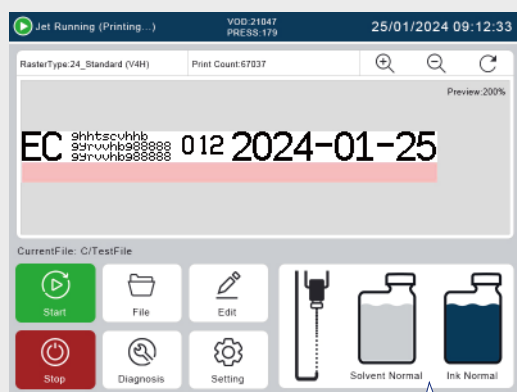
FRIENDLY INTERFACE

8-inch industrial touch screen, integrated display, touch and control as a multi-functional component, has the features of sensitive response speed, convenience and intuition, clear image, durability and space saving.

03

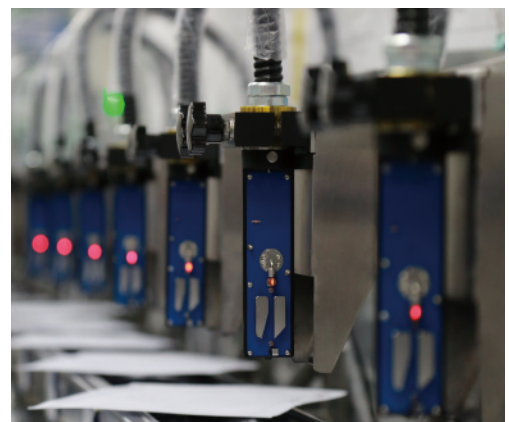
HIGH QUALITY PRINTHEAD

Sealed design eases of cleaning and reduces print head failure, durable ruby nozzle has long lifetime, and unique advanced VOD control system of real-time ink viscosity makes printing much clearer and more stable.

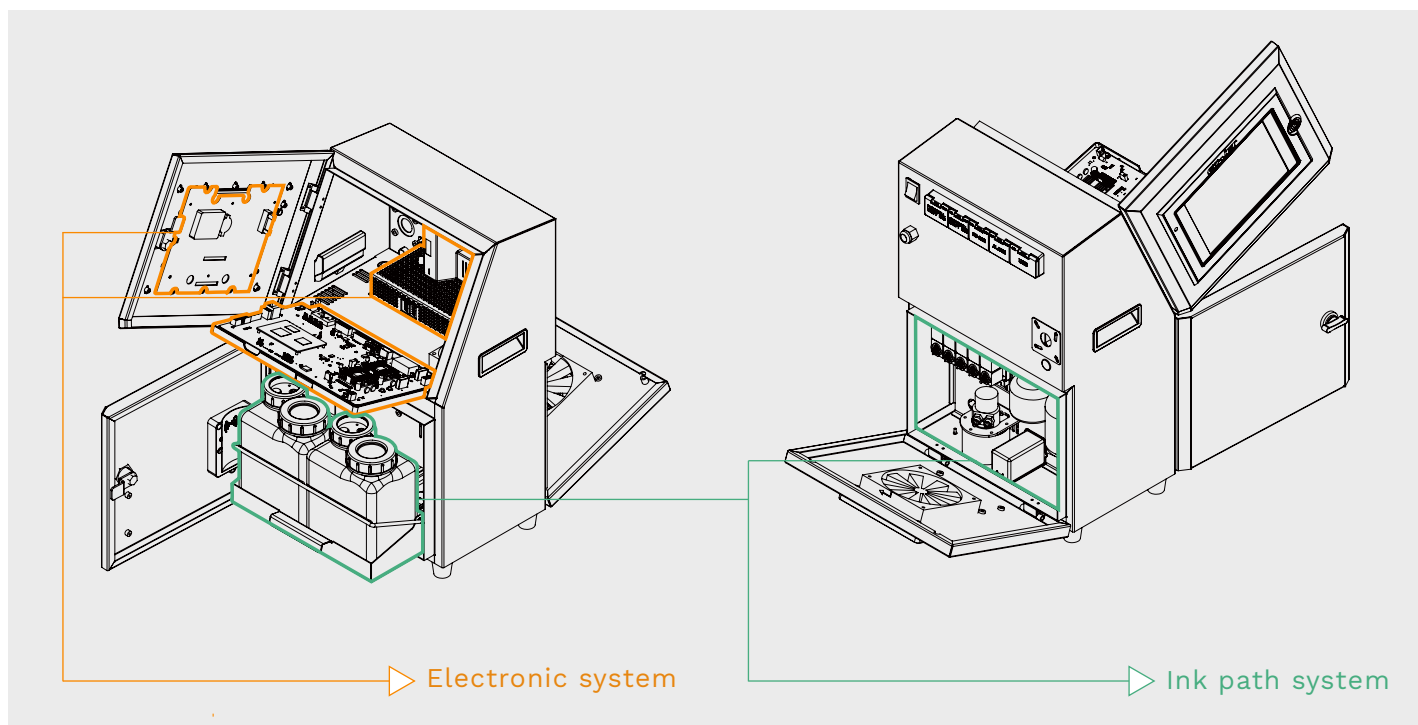


Visual ink supply

Transfer data into graphic to be displayed on the screen, the solvent and ink consumption of machine could be monitored in real time.



Ink path separated from electronic system, Classic, stable and simple design.



PARAMETER

Model	EC-JET1100	Simple Diagram (mm)
Print Head Type	MIDI (60μ) , MIDI (50μ)	
Max Print Speed(1 line)	Up to 240m/min (Ideal dot pitch 0.4mm)	
Print Height	Max 5 lines of print, up to 32 dots/20mm	
Max Printing Characters	2000 Characters Per Second	
Languages	Chinese, Traditional Chinese, English, Italian, German, Portuguese, Persian, Vietnamese, Polish, Russian, Arabic (update more languages as needed)	
Print Head Dimension	Φ42mmx188mm	
Print Head Conduit Length	2m or 3m	
Cabinet Dimension	325mmx290mmx528mm (L x W x H)	
Weight	About 18kg	
Material	Industrial-grade Stainless Steel Cabinet	
Working Temperature	5°C~45°C	
Relative Humidity	Max 90% (No Condensation)	
Protection Grade	IP55	
Power Supply	AC115V/230V, 50/60Hz	

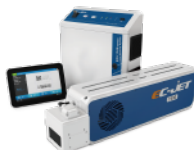
PRINT SAMPLE



APPLICATION



Continuous Inkjet Printer



Laser Coding System



Large Character Inkjet Printer



High Resolution Inkjet Printer



Piezo High Resolution Inkjet Printer



Consumable



Guangzhou EC-PACK Packaging Equipment Co.,Ltd.

Address: 16 Huang Qi Shan Road, Yong He Economic Zone, GETDD, 511356, Guangzhou, Guangdong Province, China.

Tel: (86 20) 8220 9518 Fax: (86 20) 8220 9511

<http://www.ec-jet.com>

E-mail: market@ec-jet.com

Pharmapack Europe S.R.L.

Address: Via Molino Rosso 10F,

40026 Imola (BO) , Italy

Tel: +39 054 218 903 15

Fax: +39 054 218 903 14

Pharmapack Technologies (India) Private Limited

Address: No.206 Srinivasa Towers,

Beside ITC Kakatiya Hotel, Begumpet,

Hyderabad, India

Tel: +91 406 678 9888

Pharmapack Technologies Corporation

Address: 16 Huang Qi Shan Road, Yong He Economic Zone, GETDD, 511356, Guangzhou, Guangdong Province, China.

Tel: (86 20) 8221 5907 Fax: (86 20) 8221 3367

<http://www.pppharmapack.cn>

E-mail: market@pppharmapack.com

Pharmapack North America Corporation

Address: 1850 S Carlos Ave, Bldg15, Unite 2,

Ontario, CA 91761, USA

Tel: +1 909 390 1888

Fax: +1 909 390 5388